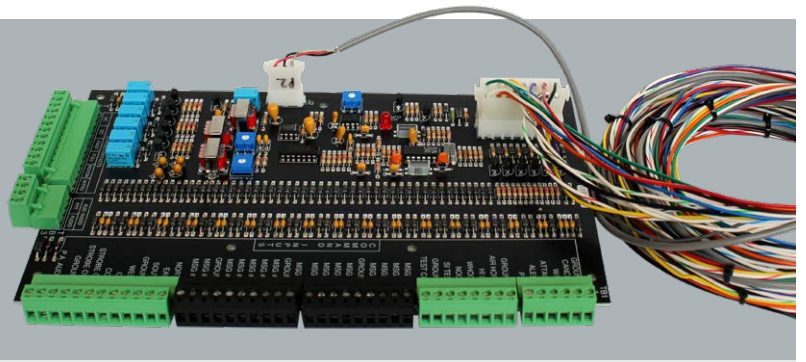


Control siren functions
via simple contact
closures



AUXILIARY/STATUS CONTROL BOARD AUXCS

STATUS

The following status bits are supported with Normally Open relay Closures:

AC	AC Voltage is present
DC	DC Voltage level is good
Partial	At least one amplifier is active
Full	All amplifiers and drivers are active
Rotor	Rotor active
Intrusion	Intrusion active

STATUS CLOSURES SPECIFICATIONS

Maximum Switching Voltage

120 VAC / 60 VDC

Maximum Switching Current

1 A

Maximum Switching Power

60 VA / 24 Watt

ORDERING INFORMATION

Product Description

Auxiliary/Status Control Board

Order No.

AUXCS

REV. A

The AUXCS is an optional module for the TWS and Giant Voice® Siren System that allows the user to remotely control siren functions and to remotely collect siren status information via simple contact closures.

In addition to commands and status functions, the Auxiliary Control/Status Option has transformer coupled circuits for accepting auxiliary audio. One circuit is active in conjunction with the Public Address command, while the other circuit is used for local audio, such as a local microphone or paging system. The local audio must have a "Push To Talk" contact closure for operation. In either case the audio is broadcast over the system.

For external controls, the "closure" must be momentary however at least 1/2 second in duration. The "closure" must be made to ground. Typically, a relay is used to make a remote connection. Input terminals allows cable diameter up to 2.5 mm²/13 AVG. Please note that AUXCS does not support maintained contact closure.

COMMANDS

The following commands are supported:

• Cancel (or Clear)	• Air Horn	• Silent Test
• Wail	• Hi/Low	• Silent Test Clear
• Attack	• Whoop	• Strobe On
• Alert	• Noon Test	• Strobe Off
• Public Address	• Digital Voice Messages (1 - 16)	

ELECTRICAL INPUT SPECIFICATIONS

Minimum Closure Time	500 ms
Input Requirement	Contact closure capable of sinking min. 20mA
Input Pin Voltage	12 VDC
Audio Input Level	-17 to +10 dB

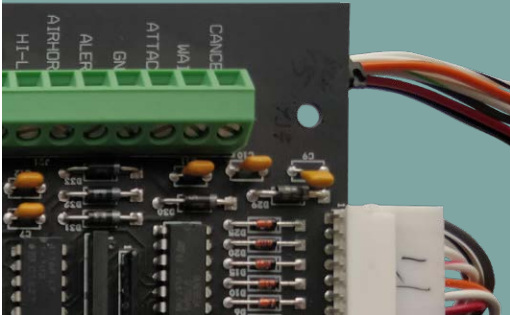
HSS



ENGINEERING®
WARNING SYSTEM SOLUTIONS

Laegaardsvej 12 · 8520 Lystrup · Denmark
Phone + 45 7022 8844
Fax + 45 7022 8866
www.hss.dk · info@hss.dk

Control siren functions
via simple contact
closures



AUXILIARY/STATUS CONTROL BOARD

AUXIN

The AUXIN is an optional module for the TWS and Giant Voice® Siren System that allows the user to remotely control simple siren functions via contact closures. All Inputs are accessible at the input terminal strip which allows cable diameter up to 2.5 mm²/13 AVG. For external controls, the "closure" must be at least 1/2 second in duration. The "closure" must be made to ground. Typically, a relay is used to make a remote connection. A ground contact is supplied at the input terminal strip for this purpose. Please note that AUXIN does not support maintained contact closure.

COMMANDS

The following commands are supported:

- | | | |
|---------------------|-------------|--------------------------------|
| • Cancel (or Clear) | • Airhorn | • Silent Test |
| • Wait | • Hi/Low | • Digital Voice Messages 1 – 4 |
| • Attack | • Whoop | |
| • Alert | • Noon Test | |

ORDERING INFORMATION

Product Description

Auxiliary/Status Control Board

Order No.

AUXIN

REV. B

ELECTRICAL INPUT SPECIFICATIONS

Minimum Closure Time	500 ms
Input Requirement	Contact closure capable of sinking min. 10mA
Input Pin Voltage	6 VDC

HSS



ENGINEERING®
WARNING SYSTEM SOLUTIONS

Laegaardsvej 12 · 8520 Lystrup · Denmark
Phone + 45 7022 8844
Fax + 45 7022 8866
www.hss.dk · info@hss.dk